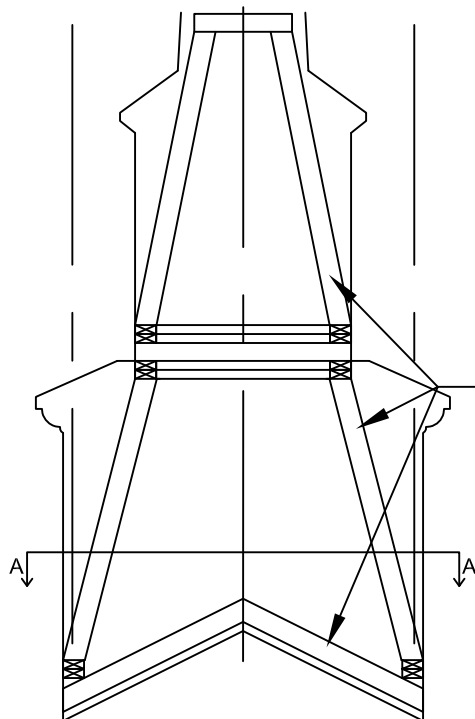
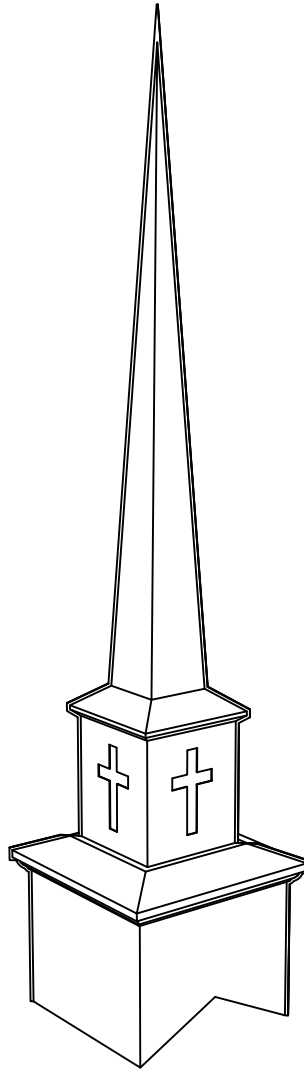
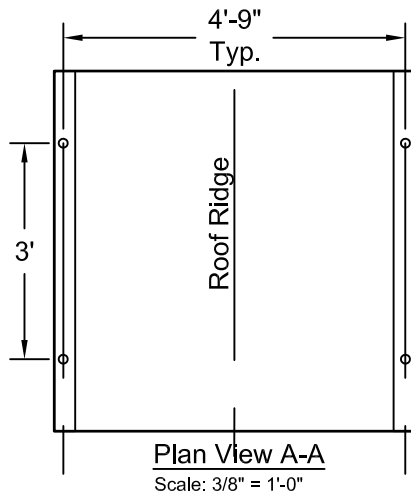


Steeple Data

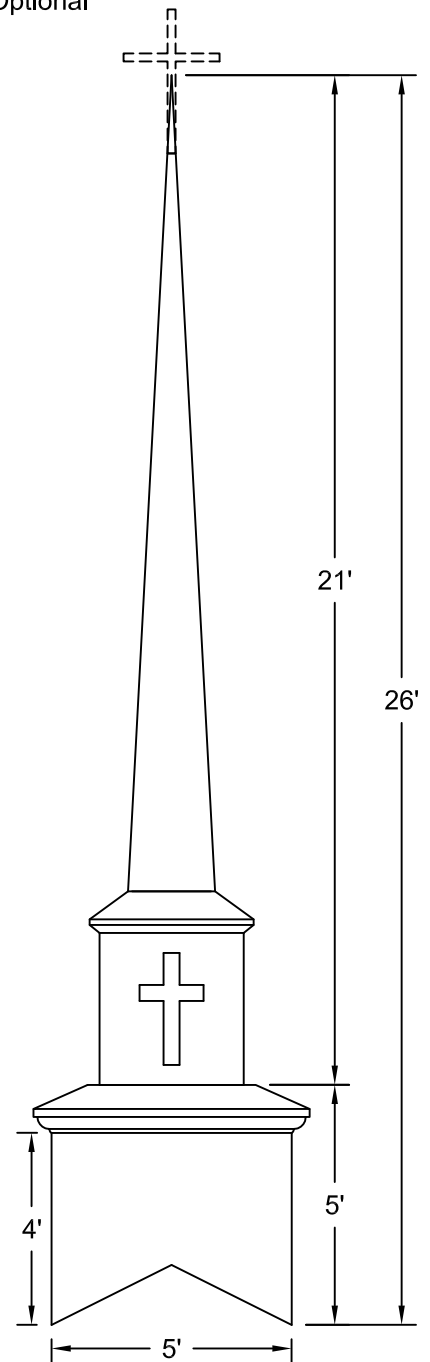
Base Width: 5'-0"
Steeple Height: 26'
Weight: 550 lbs
One Piece Steeple Unit

Available Options

- 2' or 3' Aluminum Cross
- 8" Ball
- Lightning Protection



2x4 INTERIOR
STRUCTURE WITH
HEAVY LAMINATED
BONDED TO FRP
EXTERIOR



ALL STEEPLES MUST BE
MOUNTED ON A
COMPLETED
WATERPROOF ROOF
SYSTEM AS LONG-TERM
INSURANCE AGAINST
LEAKAGE.

Note: Steeple Tip
will be reduced by
approx. 14" when
Adding Optional
Cross

Drawings are property of Fiberglass Unlimited, Inc.

Dimensions may change slightly to accommodate manufacturing.

STEEPLES

MODEL 368L

FIBERGLASS UNLIMITED, INC

Phone: 1-800-837-6211

Fax: 334-863-7975

Email: info@FiberG.com

183 Industrial Ave.
Roanoke, Alabama 36274