

Wallace Community College Selma

Fact Book

2019-2020



Published by the Office of Institutional Effectiveness and Research
Veronica Brown, Associate Dean of Institutional Effectiveness and Faculty Development
Office of Institutional Effectiveness and Research
Hank Sanders Technology Center
334-876-9241
August 2020

Table of Contents

President’s Message.....	page 3
Vision, Mission, and Goals.....	page 4
History of the College.....	page 5
Organizational Chart.....	page 6
College Committees.....	page 7
Executive Summary.....	page 8
Admissions and Enrollment.....	page 9
Academic.....	page 13
Student Financial Information.....	page 15
Faculty and Staff.....	page 16

Building Bridges to the Future

President's Message

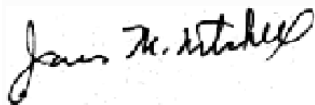
On behalf of Wallace Community College Selma (WCCS), I present to you our Fact Book. As president, I am proud of the contributions the College makes to the quality of life in the City of Selma and the surrounding counties. The College's faculty, staff, and administration are dedicated to the values that distinguish WCCS' unique role in higher education and make the College a critical community resource—access to educational opportunities, affordability, quality, diversity, and strong student success services. I am proud that WCCS continues to have a far-reaching positive impact upon students of all ages.

WCCS is fully accredited and widely regarded as one of the finest community colleges in the state and nation. WCCS is known for its academic rigor, outstanding technical training programs, superb faculty, comprehensive student services, community outreach, and excellent facilities.

If your educational goal is to attain a degree, prepare for transfer, get a new job or advance in your chosen career, WCCS is your college. WCCS is “Building Bridges to the Future” through innovative, flexible, and high-quality programs. As we continue to expand our mission and goals by meeting the needs of our students and the community, I am certain that the variety of academic programs and career-training we offer at WCCS will suit your goals and your passion.

Through the years, over 12,852 graduates have gained the knowledge and skills they need to earn their associate degrees, transfer to a four-year institution of higher education or enter the work force. I encourage you to browse our website (www.wccs.edu) and seriously consider Wallace Community College Selma.

Sincerely,

A handwritten signature in black ink, appearing to read "James M. Mitchell". The signature is written in a cursive style and is positioned above a light gray rectangular box.

James M. Mitchell, Ed.D.
President

VISION

The College shares a vision of a learning-centered education that is responsive to the needs of our service area and is manifested by quality teaching, opportunities for learning, effective educational support services, and access to a quality education. Challenged by change and innovation, the College will move forward to create a future responsive to the diverse needs of students, community, and state.

PHILOSOPHY

The philosophy of Wallace Community College Selma is expressed in the following beliefs:

- Education is essential to the economic, social, environmental, and political well-being of the citizens of West Central Alabama,
- Education should be made academically, geographically, physically, and financially accessible to all students,
- Wallace Community College Selma is uniquely qualified to deliver excellent and equitable educational opportunities and services,
- Quality education requires unity and cooperation of all stakeholders who work together toward a common goal.

MISSION

The mission of Wallace Community College Selma is to provide high-quality, learning-centered educational opportunities and services through diverse instructional-delivery modes that are responsive to individual, community, state, and global needs.

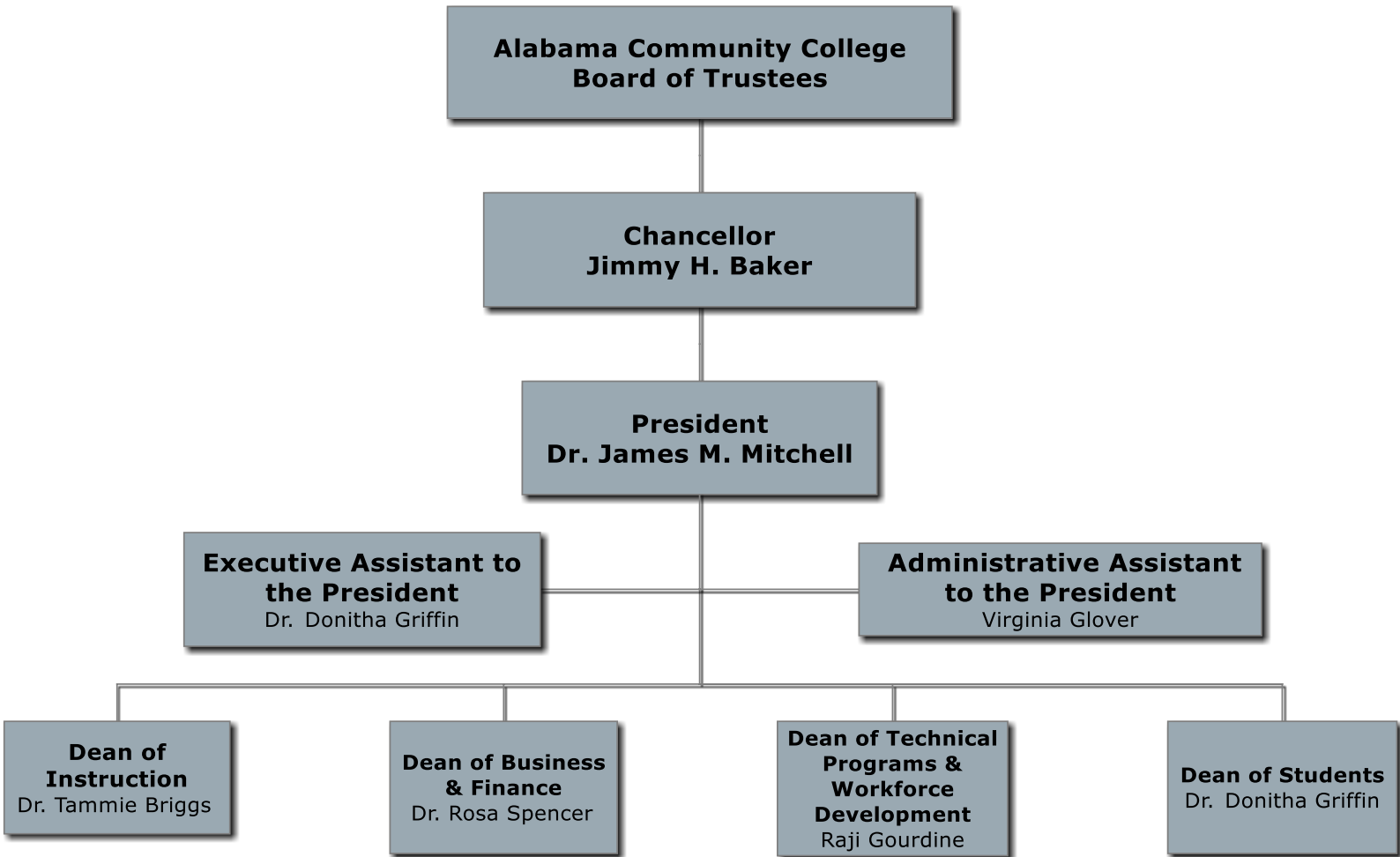
COLLEGE GOALS

1. Promote and provide teaching and learning environments and experiences that encourage the development of knowledge, skills, behaviors, and values for students in order for them to be successful in the workforce or subsequent education. **(Quality teaching/Learning)**
2. Provide and promote accessible, affordable quality education and training. **(Access)**
3. Expand the development of educational and administrative technology, enhance student learning and improve college management processes and functions. **(Technology)**
4. Provide high quality workforce development programs that meet the demands of local employers and enhance the economic development efforts of the state and the region. **(Workforce and economic development)**
5. Provide development and training opportunities that encourage faculty and staff to become more proficient in the delivery of student services, instructional services, and operational services. **(Professional Development)**
6. Promote student success and development through services consistent with student needs, interests, and abilities. **(Student Focus/Services Success)**
7. Provide access to programs and services that strengthen the educational, social, and economic life of the diverse community served by the College. **(Diversity)**
8. Provide educational opportunities that support a culture of lifelong learning. **(Community Development and Lifelong Learning)**
9. Expand and enhance the image and reputation of the College through ongoing public and communication effort. **(Public Relations)**
10. Improve efficient operations of the College. **(Efficiency of Operations)**
11. Maintain an ongoing program for the recruitment, retention, and graduation of students. **(Enrollment Management)**

History of Wallace Community College Selma

- 1963 - George Corley Wallace State Community College had its origin as William Rufus King State Vocational Technical School
- 1973 - Alabama State Board of Education authorized the second change of the institution's name to George Corley Wallace State Community College and the Associates in Arts and Associates in Sciences programs were offered
- 1974 - Institutional accreditation was granted by the Southern Association of College and Schools Commission on Colleges (SACSCOC)
- 1982 - The Associate Degree in Nursing was accredited by the Accreditation Commission for Education in Nursing (ACEN)
- 1984 - The Practical Nursing Program was accredited by the Accreditation Commission for Education in Nursing (ACEN)
- 1990 - Under the administration of President Dr. Julius Brown, the marketing name of the College became Wallace Community College Selma (WCCS)
- 2000 - Dr. James M. Mitchell became the third and most visionary president
- 2002 - WCCS started a Dual Enrollment Program, allowing high school students to get a jump start on their college career
- 2005 - WCCS became the only community college to be named an AMSTI site
- 2007 - WCCS partnered with SECME, the Bill and Melinda Gates Foundation, Jobs for the Future, and the Selma City School System to house the first Early College Program in the State of Alabama
- 2009 - WCCS was approved by the Southern Association of College and Schools Commission on Colleges to offer distance education
- 2010 - WCCS was approved by the Southern Association of College and Schools Commission on College to offer the AS and AA degrees fully online
- 2015 - The Associates Degrees in Applied Science in Business Administration, Computer Information Systems, and Office Administration were accredited by Accreditation Council for Business Schools and Programs
- 2019 - WCCS expanded its service area to include Autauga, Chilton, Dallas, Greene, Hale, Lowndes, Marengo, Perry, Sumter, and Wilcox counties
- 2019 - WCCS opened an offsite campus in Demopolis, AL offering career technical educational programs, such as industrial truck driving and HVAC
- 2019 - WCCS was selected as the first college to house a Best Buy Teen Tech Center

Organizational Chart



College Committees

Administrative Advisory Committee
Policy Review Committee
Admissions Appeals Committee
Calendar/Registration Committee
Athletics Committee
Scholarship Committee
Library Committee
Graduation Committee
Student Activities Committee
Campus Beautification Committee
Financial Aid Academic Progress Appeals Committee
Grievance Committee
Strategic Planning Council

College Goal 1 Quality Teaching and Learning

Curriculum Committee
Substantive Change Committee

College Goal 2 Access

E-Learning Policy Advisory Committee

College Goal 3 Technology

College Goal 4 Workforce and Economic Development

College Goal 5 Professional Development

College Goal 6 Student Focus/Services Success

Transitional Studies Task Force Committee

College Goal 7 Diversity

College Goal 8 Community Development and Lifelong Learning

College Goal 9 Public Relations

Recruitment/Marketing Committee

Goal 10 Efficiency of Operations, Strategy

Catalog/Student Handbook Committee
Health and Safety Committee
Faculty/Staff Handbook Committee
Facility Master Plan Committee
IEP Assessment Committee

College Goal 11 Enrollment Management

Admissions

Executive Summary

George Corley Wallace State Community College (WCCS) enrolled 1,529 students in Fall 2019. This is a 4% increase from Fall 2018. The majority of students enrolled were women (59%), Black or African American (75%), and enrolled part-time (60%). Because of an increase in dual enrolled high school students, 30% of students are age 18-19 and 21% are under age 18.

WCCS enrolled 277 first time freshmen in Fall 2019. The majority were enrolled full time (87%), Black or African American (75%) and were 50% women and 50% men.

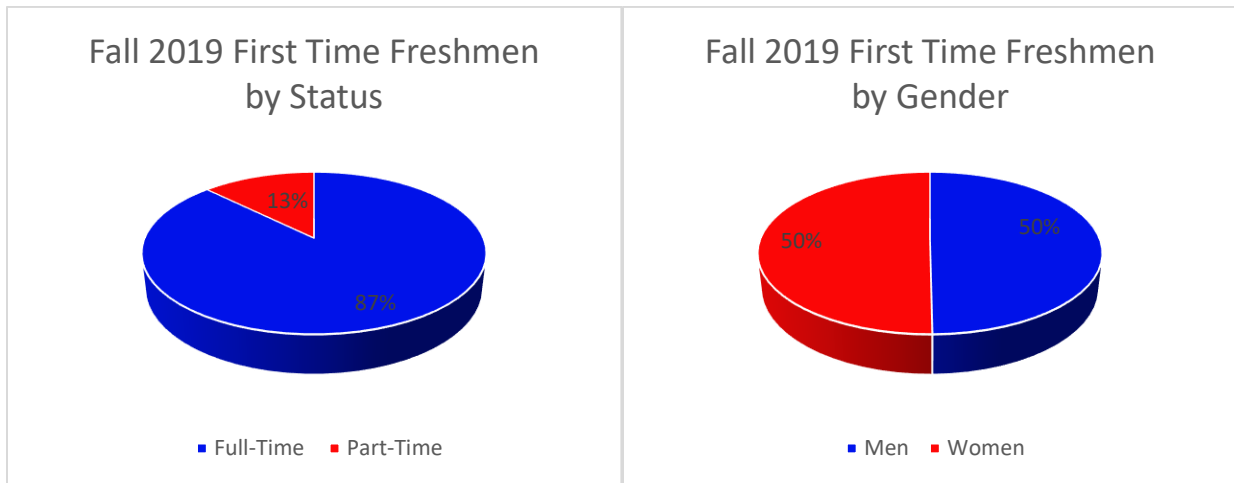
The most popular majors were the Associates in Science, Welding, and Business Administration. In Fall 2019, there were 350 class sections offered that produced 14,072 credit hours. The annual credit hour production for Fall 2019, Spring 2020, and Summer 2020 was 34,112. WCCS awarded 461 degrees in Summer 2018, Fall 2018, and Spring 2019. Of the 461 degrees awarded, 36% were certificates and 64% were Associates degrees.

Students received a total of \$2,282,721 in financial aid, with 809 students receiving \$1,954,240 in Pell Grants, for an average dispersment of \$2,416.

In Fall 2019, WCCS employed 228 faculty and staff. Of the total faculty and staff, 20% were full time faculty, 23% were part time faculty, 37% were full time staff, and 20% were part time staff.

Admissions and Enrollment

Fall 2019 First Time Freshmen				
	Full-Time		Part-Time	
	Men	Women	Men	Women
Black or African American	95	85	8	21
White	25	19	2	4
Hispanic/Latino	1	3		
Two or More Races	3	3		
Unknown	4	4		
Total	128	114	10	25
Total Full-Time/Part-Time	242		35	
Grand Total	277			



Retention Rates of First Time Degree Seeking Freshmen	
Fall 2018 FT Cohort	279
Enrolled Fall 2019	163
Retention Rate	58%
Fall 2018 PT Cohort	41
Enrolled Fall 2019	19
Retention Rate	46%
Fall 2018 Cohort	320
Enrolled Fall 2019	182
Retention Rate	57%

Fall 2019 Enrollment by Major	
Program Name	Headcount
Computer Information Systems	32
Cosmetology	22
Drafting and Design	34
Associate in Arts	17
Associate in Science	497
Criminal Justice	10
Masonry	28
Electrical Technology	52
Industrial Maintenance Technology	25
Welding	272
Associate Degree Nursing	113
Practical Nursing	76
Patient Care Technician	60
Business Administration	122
Office Administration	12
Undeclared	157
Total	1,529

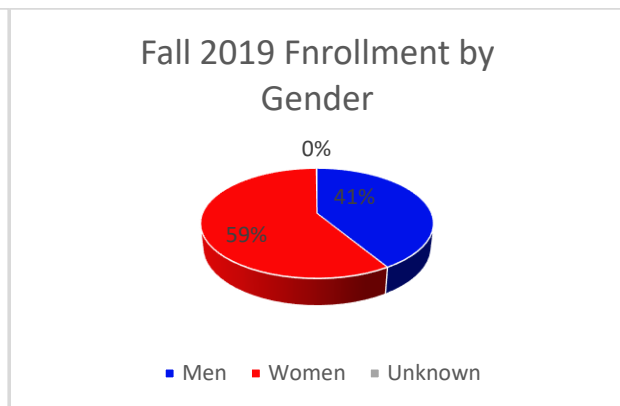
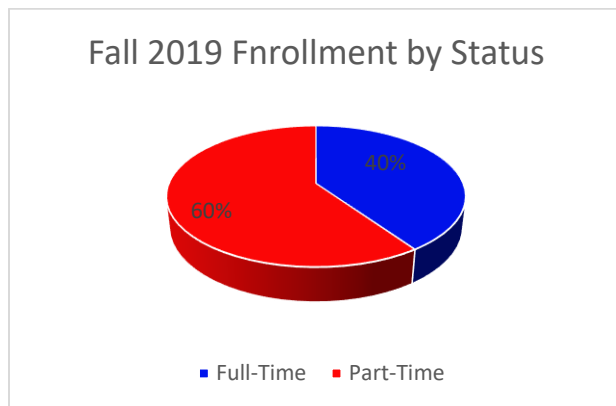
Fall 2019 Enrollment by State	
AL	1,505
FL	3
GA	3
Unknown or International	18
Total	1,529

Fall 2019 Class Sections and Credit Hour Production		
	Sections	CHP
Traditional	283	10,281
E-Learning	67	3,791
Total	350	14,072

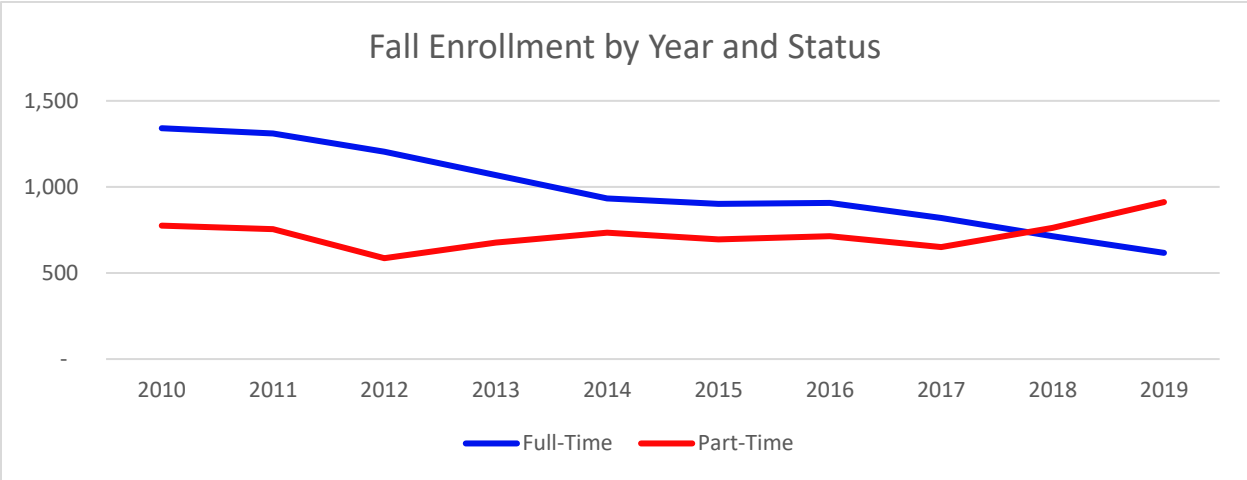
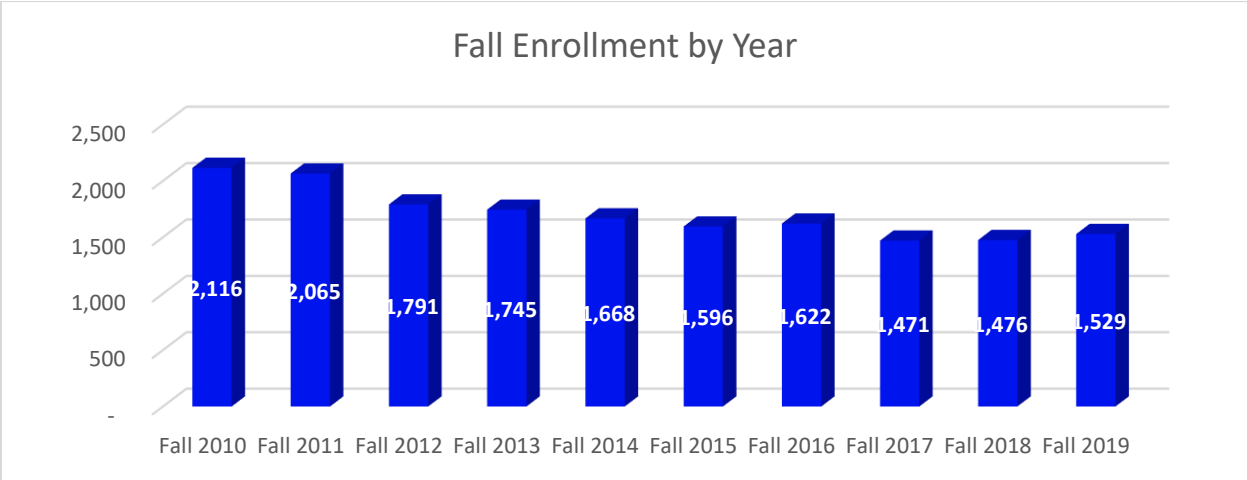
Fall 2019 Enrollment by Classification and Degree						
	AA	AAS	AS	CER	NDS	Total
Non-degree seeking undergraduate					10	10
Freshman	10	65	242	86		403
Sophomore	7	186	225	175		593
High school student					485	485
Unclassified Undergraduate		5	30	3		38
Total	17	256	497	264	495	1,529

Fall 2019 Enrollment by Age Range and Enrollment Status				
	Full-Time	Part-Time	Total	%
Under 18	-	322	322	21%
18-19	252	205	457	30%
20-21	210	92	302	20%
22-24	60	79	139	9%
25-29	46	81	127	8%
30-34	23	55	78	5%
35-39	10	31	41	3%
40-49	10	37	47	3%
50-64	6	8	14	1%
65 and Over	-	2	2	0%
Total	617	912	1,529	100%
Age 24 and under	85%	77%	80%	
Age 25 and over	15%	23%	20%	
Average Age			21.9	

Fall 2019 Enrollment by Status, Gender, and Ethnicity							
	Full-Time			Part-Time			Total
	Men	Women	Unknown	Men	Women	Unknown	
American Indian							0
Asian	2	2	1	3	3		11
Black or African American	215	265		240	424		1,144
Hispanic/Latino	1	4		4	6		15
Non-Resident Alien	6	1		5	1	1	14
Pacific Islander				2			2
White	52	45		79	117		293
Two or More Races	9	4		3	10		26
Unknown	5	5		6	8		24
Total	290	326	1	342	569	1	1,529



Fall Enrollment by Year and Status			
	Full-Time	Part-Time	Total
2010	1,341	775	2,116
2011	1,311	754	2,065
2012	1,205	586	1,791
2013	1,068	677	1,745
2014	933	735	1,668
2015	901	695	1,596
2016	908	714	1,622
2017	820	651	1,471
2018	713	763	1,476
2019	617	912	1,529



Academic

Fall 2019, Spring 2020, and Summer 2020 Credit Hour Production				
Department Code (CIP Code)	Fall 2019	Spring 2020	Summer 2020	Total
ACR (150501)	78	66		144
BIO (260101)	1,080	1,248	1,092	3,420
BUS (520201)	291	288	87	666
CHM (400501)			24	24
CIS (110101)	516	549	381	1,446
COS (120401)	306	228	120	654
CRJ (430107)	36			36
DDT (151301)	171	198	138	507
ECO (450601)	300	237	153	690
ELT (460302)	282	324	288	894
ENG (230101)	1,415	1,170	1,110	3,695
ENR (320199)	80	52	8	140
HED (340199)	438	543	198	1,179
HIS (540101)	825	693	909	2,427
HPS (519999)	259	188	51	498
INT (470303)	222	147	96	465
LBS (250101)	11	10	7	28
MAH (270101)	210	84	36	330
MAS (460101)	273	210	198	681
MTH (270101)	1,041	749	596	2,386
MUS (500902)	540	279	216	1,035
NAS (513902)	40		38	78
NUR (513801)	1,351	1,210	678	3,239
OAD (520401)	258	33		291
ORI (370103)	276	156	112	544
PED (340103)	53	33		86
PHL (380101)	87	78	84	249
POL (451001)	6	18	18	42
PSY (420101)	654	456	246	1,356
REL (380201)	156	222	198	576
SOC (451101)	84	66	87	237
SPC (231001)			21	21
SPH (231001)	516	414	237	1,167
WDT (480508)	2,217	1,896	768	4,881
Totals	14,072	11,845	8,195	34,112

Degrees Awarded - Summer 2018, Fall 2018, and Spring 2019					
Program	AA	AAS	AS	CER	STC
Computer Information Systems		6		1	
Cosmetology				10	
Drafting and Design		3		4	
Associate in Arts	81				
Associate in Science			133		
Masonry				6	1
Electrical Technology		16		15	
Industrial Maintenance Technology		8		7	
Welding				76	
Associate Degree Nursing		38			
Practical Nursing				29	
Patient Care Technician				11	
Business Administration		5			
Office Administration		3		6	2
Total	81	79	133	165	3

Degrees Awarded by Year and Level			
	Certificates	Associates	Total
SU 2016, FA 2016, SP 2017	176	241	417
SU 2017, FA 2017, SP 2018	215	259	474
SU 2018, FA 2018, SP 2019	168	293	461

Students Enrolled in Remedial Courses - Fall 2019	
Math Only	66
English Only	14
Math and English	29

Student Financial Information

In State Annual Student Tuition and Fees		
2019	2018	2017
\$150 per credit hour X 24 credit hours	\$148 per credit hour X 24 credit hours	\$138 per credit hour X 24 credit hours
\$3,600.00	\$3,552.00	\$3,312.00

Student Financial Aid - Fall 2019	
Received	839
Not Received	690

Fall 2019 Student Financial Aid				
Student Aid Name	Category	Amount	Headcount*	Average Aid
Federal Work Study	FEDR - Federal grants	\$40,284.39	31	\$1,299.50
Pell Grant	FEDR - Federal grants	\$1,954,239.71	809	\$2,415.62
Supplemental Educational Opportunity Grant	FEDR - Federal grants	\$51,000.00	68	\$750.00
Institutional Scholarship	INST - Institutional grants	\$35,600.00	19	\$1,873.68
Employee Dependent Waiver	INST - Institutional grants	\$16,375.00	12	\$1,364.58
Athletic Scholarship	INST - Institutional grants	\$165,946.80	58	\$2,861.15
Alabama Student Assistance Program	STLC - State/local grants	\$19,275.00	64	\$301.17
Total		\$2,282,720.90		
*Note: Students may be counted in multiple types of student aid.				

Faculty and Staff

Fall 2019 Faculty and Staff Profile					
	FT Faculty	PT Faculty	FT Staff	PT Staff	Total
American Indian/Alaskan Native		1			1
Black or African American	37	33	71	32	173
White	4	10	7	5	26
Unknown	5	9	6	7	27
Two or More Races				1	
Total	46	53	84	45	228

Faculty and Staff by Employment Status by Occupational Category As reported on the IPEDS Human Resources survey				
	2019		2018	
	Full-Time	Part-Time	Full-Time	Part-Time
Business and Financial Operations	4	0	6	0
Community Service Legal Arts and Media	5	9	8	10
Computer Engineering and Science	2	0	2	0
Instructional research and public service	46	53	53	56
Librarians Curators Archivists and Student and Academic Affairs and Other Education Services	13	2	14	2
Management	16	4	19	6
Natural Resources Construction and Maintenance	1	0	1	0
Office and Administrative Support	33	8	24	6
Production Transportation and Material Moving	0	0	1	0
Service Occupations	10	22	17	11
Total	130	98	145	91
Grand Total	228		236	