

INTRODUCING

Tuscaloosa All-Inclusive Playground

"Nick and I believe that playgrounds should be for all children including those with special needs. The PARA All-Inclusive Playground will be a fun-filled attraction that will enrich the lives of so many families in our community. Nick's Kids is proud to make the leadership donation to jump start this fund raising initiative. The PARA All-Inclusive Playground will be a destination for every child in Alabama."

-Terry Saban



DISABILITY STATISTICS

Overall, 12.8% of the Alabama population consists of non-institutionalized youth ages 0-20 with physical and/or mental challenges. Approximately **45,000** such youth, live in the primary project area. The number of youth without special needs but who will also use the playground exceeds that number. Parents and extended family members of special needs children and special needs adults further enhance the use of the facility.

Population of Tuscaloosa & Adjacent Counties

(Excludes Jefferson Co. who has accessible playgrounds)

County	2014 Population Estimate*
Tuscaloosa	202,212
Walker	65,471
Fayette	16,874
Pickens	20,365
Greene	8,553
Hale	15,184
Bibb	22,506

**Source: U.S. Bureau of Census Population*

Disability Type

In 2014, the prevalence of the six disability types among person of all ages in AL was:

- 2.9% Visual Disability
- 4.3% Hearing Disability
- 9.9% Ambulatory Disability
- 6.8% Cognitive Disability
- 3.4% Self-Care Disability
- 7.5% Independent Living Disability

Race

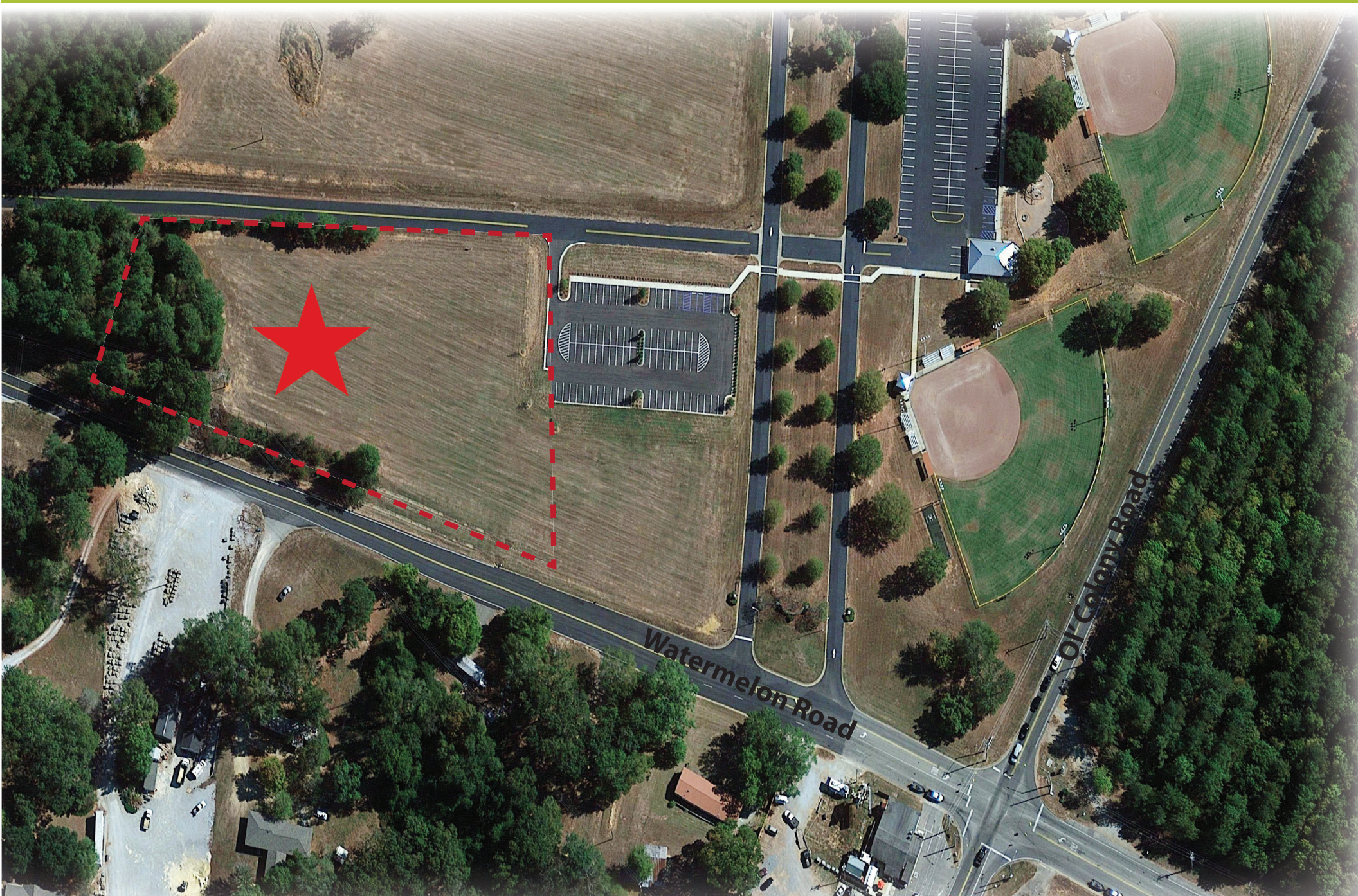
In 2014, the prevalence of disability by race was:

- 7.8% Hispanics/Latinos
- 16.5% Blacks/African Americans
- 14.4% Whites
- 3.9% Asians
- 24.8% Native Americans
- 14.1% persons of other race(s)

**Source: 2014 Disability Status Report - Alabama - Cornell University*

LOCATION

In the heart of
Tuscaloosa County at Sokol Park



PLAYGROUND

Seamless transition from one fun activity to another by using poured rubber safety surfacing



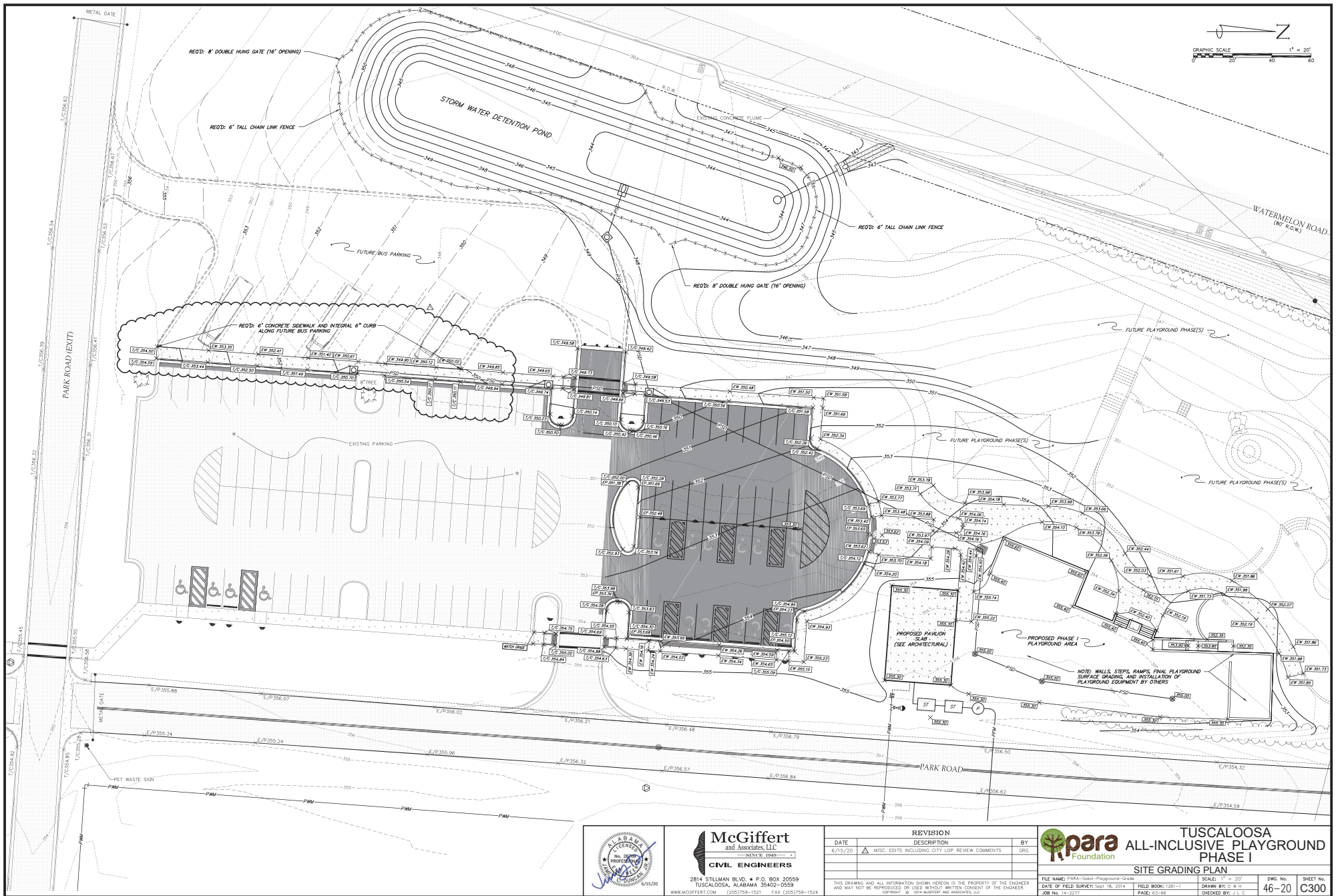
PAVILION

Unique design with fully accessible restrooms
with changing tables for all sizes.



CIVIL PLAN

Features expansion of parking by 34 spaces and entrance drop-off for large vans and buses. Sidewalks wrap the perimeter for barrier free travel.



PHASE ONE BUDGET



Site Prep & Utilities	→ \$384,150
Parking & Sidewalks	→ \$129,850
Professional Services	→ \$39,350
Playground Equipment & Install	→ \$246,607
Rubber & Turf Safety Surfacing	→ \$172,253
Pavilion with Restrooms	→ \$300,000
Site Furnishings	→ \$19,822
Perimeter Safety Fencing	→ \$30,000
Security Lighting	→ \$35,000
Future Maintenance	→ \$167,820
Phase One Total	→ \$1,524,852