



Parks Build Community



2017 Annual Report

Enriching our community through exciting recreational and cultural opportunities

PARA Offices

ADMINISTRATIVE OFFICE

614 Greensboro Avenue
Tuscaloosa, AL 35401
8 a.m.-5 p.m., Mon.-Fri.
205-562-3220

Mailing/Billing Address

P.O. Box 2496
Tuscaloosa, AL 35403

JERRY BELK ACTIVITY CENTER

2101 Bowers Park Drive
Tuscaloosa, AL 35405
6 a.m.-8 p.m. Mon.-Fri.
8 a.m.-8 p.m. Sat. and 1-5 p.m. Sun.
205-562-3200

FAUCETT BROTHERS ACTIVITY CENTER

13040 Eugenia Faucett Drive
Northport, AL 35473
5 a.m.-9 p.m. Mon.-Fri.
8 a.m.-8 p.m. Sat. and 1-5 p.m. Sun.
205-331-5600

MCDONALD HUGHES COMMUNITY CENTER

3101 Martin Luther King, Jr. Boulevard
Tuscaloosa, AL 35401
8 a.m.-8 p.m. Mon.-Fri.
9 a.m.-3 p.m. Sat. and closed Sun.
205-562-3215

LEROY MCABEE, SR. ACTIVITY CENTER

3801 Loop Road
Tuscaloosa, AL 35404
6 a.m.-8 p.m. Mon.-Fri.
8 a.m.-8 p.m. Sat. and 1-5 p.m. Sun.
205-562-3235

BOBBY MILLER ACTIVITY CENTER

300 Bobby Miller Parkway
Tuscaloosa, AL 35405
5 a.m.-9 p.m. Mon.-Fri.
8 a.m.-8 p.m. Sat. and 1-5 p.m. Sun.
205-758-0419

Inside This Report

Message from the Director

Board of Directors and Elected Officials

- 2 Infographic Highlights
- 3 How Parks Build Community
- 5 Our Sponsors
- 7 PARA Foundation
- 8 Activity Centers
- 9 Ol' Colony Golf Complex
- 10 Center Court Tuscaloosa
- 11 Arts Council
- 12 Capital Projects
- 13 Financial Overview
- 15 PARA Properties

MARY ANN PHELPS ACTIVITY CENTER

2200 Rock Quarry Drive
Tuscaloosa, AL 35406
5 a.m.-8 p.m. Mon.-Fri.
8 a.m.-8 p.m. Sat. and 1-5 p.m. Sun.
205-562-3230

PARK OPERATIONS/MAINTENANCE

1600 James I. Harrison, Jr. Parkway East
Tuscaloosa, AL 35405
8 a.m.-5 p.m. Mon.-Fri.
205-562-3210

OL' COLONY GOLF COMPLEX

401 Old Colony Road
Tuscaloosa, AL 35406
Open 7 days a week with seasonal hours
205-562-3201

CENTER COURT TUSCALOOSA

715 21st Avenue East
Tuscaloosa, AL 35404
Open 7 days a week with seasonal hours
205-331-0211

ARTS & HUMANITIES COUNCIL OF TUSCALOOSA COUNTY/BAMA THEATRE

600 Greensboro Avenue
Tuscaloosa, AL 35401
8 a.m.-5 p.m., Mon.-Fri.
205-758-5195

Message from the Director



Dear Friends,

Park and recreation facilities and programs make a widespread impact on our community. They are a tangible reflection of quality of life, and essential in creating healthy, sustainable and equitable communities for all people. PARA had 2.2 million documented visits to our parks, programs and facilities in 2017, not including open park use such as walking and biking. We are presenting a positive impact on our community, with our citizens using our parks and programs millions of times annually.

Parks are the places that people go to get healthy and stay fit. Public lands are proven to improve water quality, protect groundwater, prevent flooding, improve the quality of air we breathe, provide vegetative buffers to development, produce habitat for wildlife, and provide places for children to connect with nature and recreate outdoors. Did you know the maintained acres of grass at Ol' Colony golf course produce enough oxygen to sustain a town of 30,000 people? Good air quality impacts us all.

People and governments are now recognizing the economic value that their park and recreation departments provide for their communities. An experience-based economy creates positive economic impact and our parks and facilities provide and maintain many of the places that draw in visitors. Communities across America are competing to bring the temporary taxpayer to town. PARA is working alongside other organizations to make that happen locally.

Communities across the country are pushing to keep or gain the brightest graduates and workers. Knowledge workers have their choice of great places to live and are highly mobile. We know through research that one of the top reasons they choose to live in a community is because of outdoor recreation opportunities. We are blessed with natural resources in our community, but we need to improve access to those assets.

We know that parks improve the local tax base and increase property value. A number of studies state quality parks and recreation as one of the top three reasons that businesses cite for relocation decisions.

PARA isn't just all fun and games. We appreciate the opportunity to serve and help make a positive widespread impact for life, work and health in our community.

A handwritten signature in blue ink that reads "Gary Minor". The signature is fluid and cursive, with the first name "Gary" and last name "Minor" clearly distinguishable.

Gary Minor, Executive Director

Board of DIRECTORS

Through September 31, 2017

Peggy Hogue, Chairperson, appointed by City of Tuscaloosa
Hezekiah Carstarphen, appointed by City of Tuscaloosa
Joe Duckworth, Jr., appointed by City of Tuscaloosa
Gary Falls, appointed by Tuscaloosa County Commission
Sam Faucett, appointed by City of Northport
Bobby Franks, appointed by Tuscaloosa County Board of Education
Leroy McAbee, Sr., appointed by Tuscaloosa City Board of Education
Curtis Travis, appointed by Tuscaloosa County Commission

Elected OFFICIALS

Tuscaloosa City Council

Walt Maddox, Mayor
Cynthia Almond
Matthew Calderone
Raevan Howard
Sonya McKinstry
Phyllis Odom
Edwin Pugh
Kip Tyner

Tuscaloosa County Commission

Hardy McCollum, Probate Judge
Stan Acker
Reginald Murray
Mark Nelson
Jerry Tingle

Northport City Council

Donna Aaron, Mayor
Lee Boozer
Robby Davis
Jeff Hogg
Jay Logan
Rodney Sullivan

Board of Education

Dr. Mike Daria, Superintendent
Tuscaloosa City Schools
Dr. Walter Davie, Superintendent
Tuscaloosa County Schools

U.S. Senators

Hon. Richard Shelby
Hon. Doug Jones

U.S. Representatives

Hon. Robert Aderholt
Hon. Terri Sewell

Governor

Hon. Kay Ivey

Secretary of State

Hon. John Merrill

State Senators

Hon. Gerald Allen
Hon. Greg Reed
Hon. Bobby Singleton

State Representatives

Hon. Alan Harper
Hon. Chris England
Hon. Artis McCampbell
Hon. Bill Poole
Hon. Kyle South
Hon. Rich Wingo

THE ARTS
COUNCIL

123,837
ATTENDANCE



3X



ASA STATE CUP
CHAMPIONS

500+
CLINIC
HOURS



54,163

3AMA
(THEATRE)

K-12 ATTENDANCE

100+

SENIOR
DANCES



26,430

YOUTH SERVED



PARK IMPROVEMENTS

RAY JENKINS MP ARENA
WILL MAY DOG PARK
BUDDY POWELL PAVILION
CENTER COURT TUSCALOOSA
HURRICANE CREEK PARK
MCABEE CENTER
PALMORE PARK
SOKOL PARK NORTH
ODOM PARK
MONTGOMERY PARK

452

WABL
PLAYERS



30,663

FITNESS
ATTENDANCE



239,854

ACTIVITY CENTER
FITNESS VISITS



20



PARA4LIFE
TRAVEL
EXPERIENCES

ADULT
SPORTS



SPECIAL
OLYMPICS
MEDALS

VOLLEYBALL
BASKETBALL
SOFTBALL

INDOOR
PLAY UNIT
PARTIES

68



4,742
VISITS

SilverSneakers®
by Tivity Health



40



PLAY UNITS

353,214 SQ. FT.

CONDITIONED
SPACE



INTRODUCING



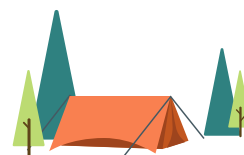
PICKLEBALL

50+



PARKS AND
FACILITIES

719 DAY
CAMPER



CAMPING @
VAN DE GRAAFF
PARK

47,567
LIFEGUARD
HOURS



151

CHRISTMAS
PARADE
ENTRIES

2,438

ACRES OF PARK
LAND



2,283,266 TOTAL
ATTENDANCE



para
Tuscaloosa County Park
& Recreation Authority

2017 HIGHLIGHTS

OUR MISSION:

TO ENRICH OUR COMMUNITY THROUGH EXCITING
RECREATIONAL AND CULTURAL OPPORTUNITIES

HOW PARKS BUILD COMMUNITY

We are committed to helping build a strong community and a vibrant economy by providing safe and exceptional parks, facilities and programs.

The National Recreation and Park Association highlights the contributions that park and recreation agencies make through its Three Pillars. Park and recreation agencies spark significant economic activity that make our cities, towns and counties more prosperous.



1. CONSERVATION: Parks help preserve natural resources in a community. Local agencies play a leadership role in protecting open space, connecting children to nature and providing education and programs that help communities engage in conservation practices.



2. HEALTH AND WELLNESS: Local park and recreation agencies provide crucial health and wellness opportunities for all populations in communities across the country. As many people in the United States continue to face serious health issues – including rising rates of chronic disease, an increased prevalence of sedentary lifestyles and poor nutrition habits – parks and recreation offers an affordable and accessible solution.



3. SOCIAL EQUITY: Public parks are treasured resources that are available to everyone regardless of age, race, income or physical or cognitive ability. Local park and recreation agencies ensure that all members of a community have access to open space and recreational opportunities.

10 year GROWTH

2007

- 28 Parks
- 1.2 M uses
- 27% PARA earned income
- 77 full time/150 part time staff

2017

- 40 Parks
- 2.2 M uses
- 42% PARA earned income
- 102 full time/227 part time staff



5 year GROWTH

2012

- 0 included fitness classes
- 1,671 senior attendance

2017

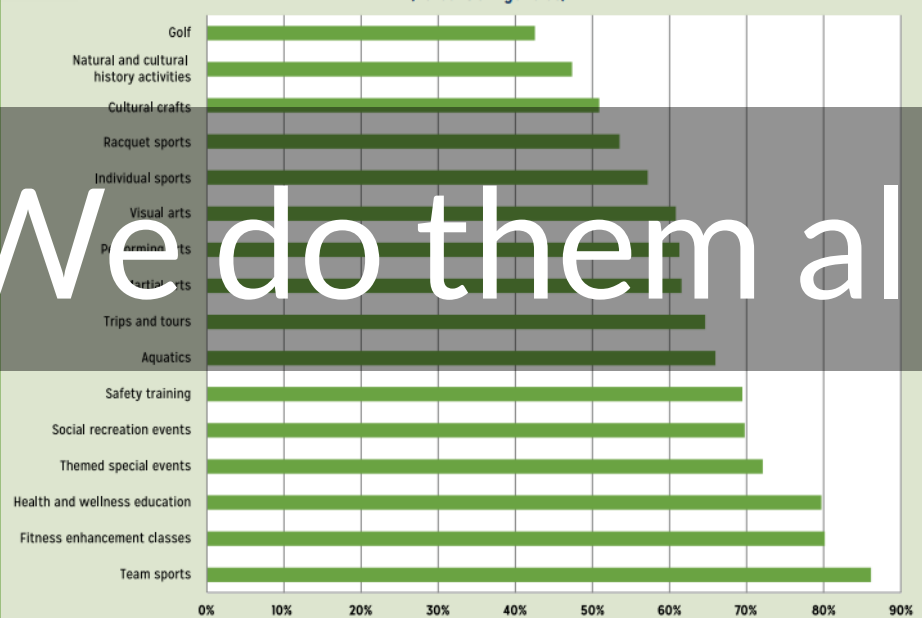
- 30,663 participants in 27 PARAFit classes
- 13,666 PARA4Life and Silver Sneakers

PARA offers all of the most popular programs offered by Park & Rec programs nationwide

PARA Programs

Figure 5

Programs Offered by Park & Recreation Agencies
(Percent of Agencies)



We do them all

Many of our childhood memories were made here
and have an impact on our lives today

Thank you to our Donors



Leroy McAbee Sr. Family Foundation

Buffalo Rock Pepsi
McAbee Construction
NUCOR

Parker Towing

Insurance Center of Tuscaloosa
Regions Bank

Townsend Automotive Group
J. A. Dawson & Co

Bank of Tuscaloosa
SmartBank

Hollyhand Realty, Inc.
Walker Associates, Inc.
Way, Ray, Shelton & Co.

Bank of Moundville
Plott Building Partnership
Kyle Office Solutions
Tuscaloosa Chevrolet
Award Company of America
Bryant Bank

Cadence Bank, N.A.
Duckworth-Morris Realty
Tuscaloosa Farmers Cooperative
CINTAS

Hall-Taylor Construction, Inc
Hubbard, McIlwain & Brakefield
Building Specialties
First National Bank of Central Alabama
First State Bank of the South, Inc.
Marcum Architects
Alabama One Credit Union



ere created in a neighborhood park
on who we are today.

Honors and Sponsors

The Will May Foundation
Tuscaloosa Association of Realtors

Jimmy John's
Alabama Credit Union
Alabama ONE Credit Union

John Plott Co. Inc.
Harrison Construction
McGiffert & Associates
Riverfall Credit Union
Pritchett-Moore, Inc.
K&A Builders
Straitline Fence
Alabama Power Foundation
James I. Harrison, Jr.
S.T. Bunn Construction Co.
The Tuscaloosa News

Media Sponsors

ABC 33/40, CBS 42, FOX 6, NBC 13
WVUA 23
iheartmedia, Townsquare Media,
WJRD Radio and WQZZ Radio
al.com
The Northport Gazette
The Tuscaloosa News



Pictured L-R: Director Gary Minor with Grand Marshals Shelley Jones, Dee Ward, Rev. Thomas W. Linton and Virgie Greene as they are recognized for their service by Mayor Walt Maddox



PARA FOUNDATION

The PARA Foundation is dedicated to raising FUNds to advance and strengthen quality in park and recreation within Tuscaloosa County Park & Recreation Authority properties. One hundred percent of PARA Foundation funds raised are utilized for projects identified by the PARA Foundation and are not intended to support PARA operational expenses. The PARA Foundation balance was \$212,792.93 as of September 30, 2017.



Examples of PARA Foundation successes include:

Dr. Peter Norman Bligh Pump Track
Will May Dog Park
Veterans Memorial Park
Ray C. Jenkins Multipurpose Arena
Center Court Tuscaloosa
Memorial park benches

“A community hoping for greatness must have

great parks

for its people.”

~ Fredrick Law Olmstead, American landscape architect

Veterans Memorial Park Endowment

The purpose of the Veterans Memorial Park Endowment is to raise funds with the principle being maintained in perpetuity and the annual earnings being allocated to enhance and maintain the park.

Located on McFarland Boulevard on the grounds of the former U.S. Army Northington General Hospital Chapel, the one-acre site has been retained in public ownership, with PARA's oversight. This historic site is mandated to have a beneficial public purpose.

The Veterans Memorial Park Association worked with representatives of local governments, PARA and the private sector to create this educational veterans park. To date, the majority of the costs have been donated by the private sector, including more than \$100,000 of in-kind construction activity.

The Veterans Memorial Park Endowment is overseen by the PARA Foundation. Donors may make gifts to the PARA Foundation, designating it for the Veterans Endowment, at any time.

PARA ACTIVITY CENTERS

PARA has six - soon to be seven - Activity Centers conveniently located throughout the community. Each has it's own character and most have a gymnasium, fitness equipment, catering kitchen and rooms available to rent for meetings, parties, classes or other functions. Three levels of annual center membership - each with included fitness classes - are available for purchase. Membership options, casual user fees and rentals are economically priced.

Jerry Belk Activity Center

- Opened August 1997; dedicated October 1997
- Featuring two gyms, walking track and fitness equipment

Faucett Brothers Activity Center

- Opened March 2013; dedicated May 2013
- Featuring recreational and therapeutic pools, archery park, rock climbing wall and walking track

McDonald Hughes Community Center

- Acquired December 1997; addition dedicated June 1999 and renovated in 2017
- Featuring fitness equipment and catering kitchen

Leroy McAbee, Sr. Activity Center

- Opened April 1998; dedicated July 1998
- Featuring a therapeutic pool
- Collaborating with FOCUS for joint usage of Center

Bobby Miller Activity Center

- Opened September 2006; dedicated September 2006
- Featuring the Brown Branch of the Tuscaloosa Public Library
- Featuring walking track and therapeutic pools, climbing wall, raquetball, and indoor playground

Mary Ann Phelps Activity Center

- Opened February 1998; dedicated June 1998
- Featuring a walking track and fitness equipment

East Tuscaloosa Activity Center

- Expected opening 2018





Ol' Colony continues to be a tremendous asset to PARA properties and is consistently recognized as one of the top public courses in the nation. It is considered one of the most challenging courses in the southeast, yet offers multiple tees for golfers of all levels. Improvements from the prior two years yielded mature Bermuda grass greens.

Ol' Colony is home to the only First Tee program in Alabama, a program which helps shape the lives of young people from all walks of life by reinforcing values like integrity, respect and perseverance through the game of golf. With the additional location of Tall Pines, we touched 26,430 junior golfers with 400+ of these participating in certification programs.

The Jerry Pate Golf Center at Ol' Colony is one of the top practice facilities in the nation and serves as the official home of The University of Alabama's golf programs. Ol' Colony is proud to support the 2013 and 2014 NCAA national championship team for men and 2012 NCAA national championship team for women.

The Pro Shop is fully stocked with everything a golfer might want in brand name golf gear. The Bounce Back Grill features a generous menu of made-to-order breakfast and lunch specialties. Alfresco dining on the patio makes for a memorable experience for golfers and non-golfers alike.

The Brion Hardin First Tee Teaching Facility at Ol' Colony is equipped with a Trackman Launch Monitor, V1 Pro Software and Explanar Plane System, an indoor putting area and two hitting bays for fittings and lessons. Individual and corporate rate lesson packages are available.





Center Court Tuscaloosa

A premier tennis facility in the state, Center Court Tuscaloosa is in the heart of the revival of the Alberta area. Located in Jaycee Park, it represents the eastern terminus of the City Walk. Built with \$3 million in appropriations from the City of Tuscaloosa and Tuscaloosa County Commission, along with private funding from the Tuscaloosa Tennis Association and the Community Foundation of West Alabama, the facility represents resilience and innovation in an area devastated by the 2011 tornado.

The Emily Baker Indoor Tennis Center was dedicated in July 2015, and features three indoor courts. Additional amenities include 10 outdoor courts, six clay and four hard, a pro shop and offices. The facility opened to accolades from *Tennis Industry* magazine as 2015 Indoor Tennis Facility of the Year.

The facility is open to the public on a pay-to-play basis and offers memberships. Ability and age-based lessons, group clinics, league play, socials, and tournament competition are available. CCT hosts leagues, mixers and tournaments for the Tuscaloosa Tennis Association and the USTA.





Arts Council of Tuscaloosa

*The Arts Council served
54,163 children
through the BAMA Theatre*

The mission of The Arts Council is to promote and encourage the arts and humanities in Tuscaloosa County. The Arts Council serves as the umbrella organization for 50 Member Organizations, offers educational programs and manages both the historic Bama Theatre and Dinah Washington Cultural Arts Center. Member organizations are local nonprofit arts and cultural groups that contribute to the local arts community through their programming and educational services. The Bama Theatre has been a Tuscaloosa feature since 1938 and continues as a venue for entertainment and the arts. Independent and foreign films are screened as part of the Bama Art House Movie Series. The Council recognizes volunteers, educators and artists in the bi-annual Druid Arts Awards, and the Small Grants Program nurtures small and pilot arts activities. Bama Fanfare, Spectra and the Poetry Out Loud educational programs serve over 40,000 children annually. Gallery exhibits sponsored by The Arts Council include the West Alabama Juried Show, Double Exposure Photography Competition and the Visual Art Achievement Awards. In 2013 the organization opened the Dinah Washington Cultural Arts Center, located in the existing four-story 1903 Allen Jemison building at the corner of Greensboro Avenue and 7th Street. Venues in the facility include a black box theatre, The Arts Council Gallery, The University of Alabama Gallery, the Grand Hall, professional catering kitchen, conference room and office space. Events sponsored by The Council at the facility include multiple exhibits per year in the gallery and collaborative events in the Grand Hall.

Visit www.tuscart.org for more information.



2017 Capital Project Management

The year 2017 was distinguished by completion of several years of renovations and construction with designated allocations from our funding sources. The following projects are in progress or completed:

- Showers were installed in the restrooms in the Ray C. Jenkins Multipurpose Arena in Sokol Park.
- The Will May Dog Park large dog area underwent renovations and a viewing patio was installed.
- One mile of new multipurpose trails were built behind the Buddy Powell Pavilion which connects it to Sokol Park trails.
- Four new hard courts were added to the Center Court Tuscaloosa tennis complex.
- The ADECA Land and Water Conservation Fund awarded a grant for a composting restroom to be installed in Hurricane Creek Park.
- Construction began on a FOCUS office addition at the Leroy McAbee, Sr. Activity Center.
- The Harrison Taylor Splash Pad in Palmore Park received new restroom doors courtesy of a private donation.
- Sokol Park North received a modern IONiX playground and bathroom installation.
- The Jaycee Park playground was renovated and a new skatepark added.
- A permanent bathroom was installed in Burrell Odom Park.
- A 50 person storm shelter was installed in Northside Park.
- Construction began on the East Tuscaloosa Activity Center in Lakeview, a projected high population growth area.

*Architectural rendering of future East Tuscaloosa Activity Center
Scheduled opening 2018*

Attendance

January 1-December 31, 2017

Open park use
is not included in
attendance numbers

~130,000 in 5 years

1,671 in 2012

1.2 M in 2007

Program	By Reservation	Percentage
Aquatics	232,671	10.19%
Arts	123,837	5.42%
Athletics	620,837	27.19%
Adult 104,234		
Youth 516,603		
Casual and Membership Uses	239,854	10.50%
Casual Uses 23,842		
Membership Uses 216,012		
Facility Rental/Users	674,500	29.54%
Center Rentals 224,671		
Fields 187,878		
Other Indoor Facilities 22,492		
Other Outdoor Facilities 76,911		
Shelters 62,548		
Fitness Instruction	30,663	1.34%
Instructional Classes	677	0.03%
Ol' Colony Golf	98,655	4.32%
Rounds 32,500		
Driving Range 32,636		
The First Tee of Tuscaloosa 26,430		
Diner, non-golf 7,089		
Center Court Tuscaloosa	10,624	0.47%
PARA4Life and other Senior	8,924	0.39%
Silver Sneakers	4,742	0.21%
Outdoor Adventure	4,298	0.19%
Special Events	51,714	2.26%
Community Programming	137,124	6.01%
Therapeutic Recreation	6,862	0.30%
Youth, non-athletic	35,411	1.55%
PARAkidsDay Camp 31,094		
Childcare at Faucett 4,317		
Volunteer Hours	1,873	0.08%
TOTAL	2,283,266	100.00%

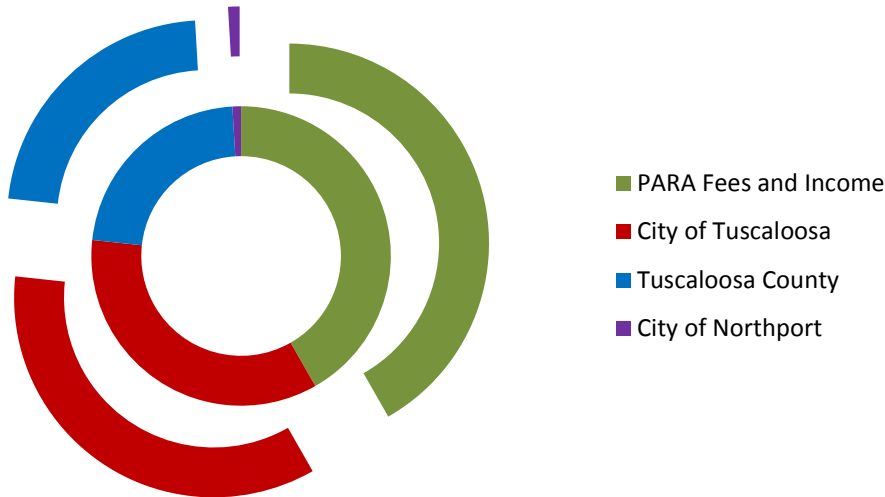
Capital Disbursements

October 1, 2016-September 30, 2017

PARA Division	Dollar Amount	Percentage
East Tusc. Activity Center	\$890,258.00	38.60%
Sokol Park	\$508,107.00	22.03%
Bowers Park	\$184,728.00	8.01%
Jaycee Park	\$150,432.00	6.55%
Equipment	\$99,710.00	4.32%
River Road Park	\$93,764.00	4.07%
McAbee Center - FOCUS	\$80,633.00	3.50%
Hughes Center	\$60,148.00	2.60%
Odom Park	\$53,593.00	2.32%
Park Development	\$45,147.00	1.96%
District Development	\$41,436.00	1.80%
Phelps Center	\$34,800.00	1.50%
Palmore Park	\$21,544.00	0.93%
Van de Graaff Park	\$17,345.00	0.75%
Holt Senior Center	\$14,072.00	0.61%
Building Improvements	\$10,456.00	0.45%
TOTAL	\$2,306,173.00	100%

Receipts

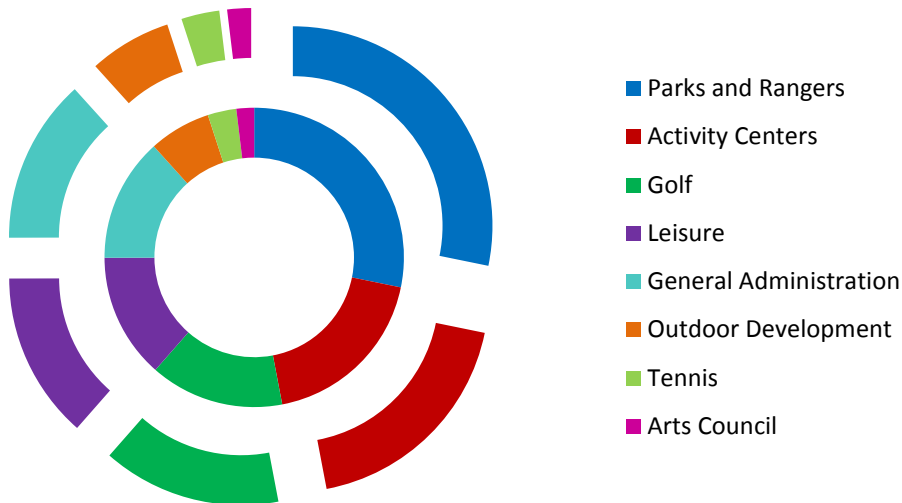
October 1, 2016-September 30, 2017



Funding Source	Dollar Amount	Percentage
PARA Fees and Income	\$5,619,648	41.75%
City of Tuscaloosa	\$4,706,035	34.96%
Tuscaloosa County	\$3,010,375	22.36%
City of Northport	\$125,000	0.93%
TOTAL	\$13,461,058	100%

Disbursements

October 1, 2016-September 30, 2017



PARA Division	Dollar Amount	Percentage
Parks and Rangers	\$3,662,189.48	28.21%
Activity Centers	\$2,438,479.26	18.79%
Golf	\$1,878,389	14.47%
Leisure	\$1,751,276.70	13.49%
General Administration	\$1,732,037.62	13.34%
Outdoor Development	\$867,773.11	6.68%
Tennis	\$401,598.44	3.09%
Arts Council	248,476.11	1.93%
TOTAL	\$12,980,219.72	100.00%

PARA Properties

	Acres	Rate	Capacity
1 BAMA Rock Garden 11038 Bama Rock Garden Rd., Vance 35496	59		
2 Binion Creek Landing 16651 Hwy. 43 N., Northport 35473	6.2		
3 Bowers Park 2101 Bowers Park Drive, Tuscaloosa 35405	156.8		
Elm Shelter		\$60	50
Maple Shelter		\$60	75
Minnie Sellers Shelter		\$95	150-175
Pine Shelter		\$60	50
Sycamore Shelter		\$60	75
4 Braughton Park 13166 Hwy 11 South, Fosters 35463	15		
5 Capitol Park 2800 6th Street, Tuscaloosa 35401	5	\$50/hr	
6 Cardinal Park 7325 Robert Cardinal Airport Rd., Tuscaloosa 35401	5		
Cardinal Shelter		\$60	75
7 Carroll's Creek Island Lake Tuscaloosa	26.7		
8 Center Court Tuscaloosa 715 21st Avenue, Tuscaloosa 35404	three indoor and ten outdoor courts		
9 Evans-Roshell Park 4006 20th Street NE, Tuscaloosa 35401	3.5		
10 Faucett Brothers Park 13040 Eugenia Faucett Dr., Northport 35473	80		
Hawthorne Shelter		\$60	25
Loblolly Shelter		\$60	25
White Oak Shelter		\$60	25
10A Tuscaloosa Archery Park	sign in at FBAC		
11 Fosters Boat Landing Fosters Landing Lane, Fosters 35463	10		
12 A.L. Freeman Park 3001 Dragons Ln., Tuscaloosa 35401	3		
Spruce Shelter		\$60	75
13 Harmon Park 2901 Greensboro Ave., Tuscaloosa 35401	3.4		
14 Snow Hinton Park 1000 Hargrove Rd. E., Tuscaloosa 35405	40		
Cherry Shelter		\$70	25
Magnolia Shelter		\$95	200
Sequoia Shelter		\$100	50
15 Hughes Center Ball Fields			
16 Hurricane Creek Park Hwy 216, Peterson	249		
Alabama Power Shelter			25
17 Jaycee Park 701 Kicker Rd., Tuscaloosa 35404	6		
Jaycee Pavilion		\$105	300
18 Kaulton Park 2929 Pine St., Tuscaloosa 35401	9.3		
19 Kentuck Park 3401 5th Street, Northport 35476	38.5		
Hickory Shelter		\$60	75
Sweet Gum Shelter		\$60	50
20 McKinney Park 1400 19th Street, Tuscaloosa 35401	1.4		
21 Miners Community Park 19543 Abernant Loop Road, Abernant	1		
22 Monnish Park 1500 Hackberry Ln., Tuscaloosa 35401	5.9		
Dogwood Shelter		\$60	35
Oak Shelter		\$60	35
23 Montgomery Park Hwy 171 North	8.71		
24 Moundville Boat Landing Black Warrior River, Moundville	5		
25 Newt Hinton Park 300 Bobby Miller Pkwy., Tuscaloosa 35405	39		

PARA Properties

	Acres	Rate	Capacity
26 Northport Community Center 2100 Park Street, Northport 35476	4.5	\$140	150
27 Northside Park 19325 Northside Pkwy, Northport 35475	3		
28 Burrell Odom Park 3230 8th Street, Tuscaloosa 35401	2.1		
39 Ol' Colony Golf Complex 401 Old Colony Rd., Tuscaloosa 35406	597		
30 Palmore Park 3701 Fosters Ferry Rd., Tuscaloosa 35401	215		
Mimosa Shelter		\$60	75
Red Bud Shelter		\$95	100
Walnut Shelter		\$60	75
31 E.C. "Buddy" Powell Pavilion 4205 Northridge Rd., Tuscaloosa 35406		\$150/4 hrs.	300
32 Queen City Park Queen City Avenue, Tuscaloosa 35401	11.9		
China Fir Shelter		\$35	10
33 River Road Park 1600 Jack Warner Pkwy., Tuscaloosa 35401	5		
Birch Shelter		\$40/hr	50
Cypress Shelter		\$85	50
34 Riverview Boat Landing Black Warrior River, Tuscaloosa 35401	5		
35 Rock Quarry Park Boat Landing 2300 New Watermelon Rd., Tuscaloosa 35406	46.5		
Cedar Shelter		\$60	50
36 Rosedale Park 3000 Greensboro Ave., Tuscaloosa 35401	5.8		
36A Harmon Field			
37 Sexton Park Sexton Bend Road, Tuscaloosa 35401	18		
38 Sharpe's Landing 13750 Sharp's Lake Rd., Northport 35473	21		
39 Annette N. Shelby Park 1614 15th St., Tuscaloosa 35401	12	\$55	
40 Springbrook Park 500 Springbrook Circle, Tuscaloosa 35405	1		
41 Munny Sokol Park South 5901 Watermelon Rd., Northport 35473	325		
Willow Shelter		\$60	75
Will May Dog Park			
Ray C. Jenkins Multipurpose Arena 6025 Watermelon Rd., Northport 35473		\$375	
42 Munny Sokol Park North 6198 Watermelon Rd., Northport 35473			
Box Elder Shelter		\$60	75
43 Treasure Island Lake Tuscaloosa	24.8		
44 Van de Graaff Arboretum & Historic Bridge Park 3231 Robert Cardinal Airport Rd., Northport 35476	148		
45 Veterans Memorial Park 1701 McFarland Blvd. E., Tuscaloosa 35404	0.2		
A Jerry Belk Activity Center 2101 Bowers Park Dr., Tuscaloosa 35405			
B Faucett Brothers Activity Center 13040 Eugenia Faucett Drive, Northport, AL 35473			
C McDonald Hughes Community Center 3101 MLK Blvd., Tuscaloosa 35401			
D Leroy McAbee, Sr. Activity Center 3801 Loop Rd., Tuscaloosa 35405			
E Bobby Miller Activity Center 300 Bobby Miller Pkwy., Tuscaloosa 35405			
F Mary Ann Phelps Activity Center 2200 Rock Quarry Dr., Tuscaloosa 35406			
G East Tuscaloosa Activity Center - coming soon 71973 Hwy 216, McCalla 35111			



Parks connect you with friends, family
and nature and get you revitalized.
Get Your Play On!



Tuscaloosa County Park & Recreation Authority
P.O. Drawer 2496
Tuscaloosa, AL 35401
205-562-3220
tcpara.org